

The background of the entire image is a landscape photograph. It shows a sunset or sunrise with the sun low on the horizon, creating a bright glow and long, wispy clouds. The sky transitions from a deep blue at the top to a warm orange and yellow near the horizon. In the foreground, the dark silhouettes of trees and hills are visible against the bright sky.

# Trails

Feature Length Romance / Mystery / Drama  
based on the novel of the same name by R.A. Abell




A spirited Ph.D. ecology student is rescued during a freak storm by a male stranger.

Even as their romantic interest deepens, they find evidence that toxic waste disposal may have caused the storm.

Pursuit of answers puts them in danger from corporate criminals.





A steep, rocky mountain slope with sparse green vegetation under an overcast sky. The rock face is rugged and textured, with patches of small green plants growing in the crevices. The sky is a uniform, pale grey, suggesting an overcast day.

Set in the mountains and deserts of Arizona and Northern Mexico, this moving tale of love and intrigue features strong female characters in lead roles.

Inspired by corporate misbehavior — from decades of deception by the tobacco industry to the chemical conspiracies featured in the films Dark Waters and Erin Brockovich — this fictional story is based on yet another environmental, political, and social problem — unregulated injection of particles into the atmosphere, supposedly for climate manipulation.



A woman with long brown hair, wearing a red t-shirt and dark jeans, is hugging a man from behind. The man has short brown hair and is wearing a brown t-shirt and blue jeans. They are standing in a field of tall, dry grass under a clear sky. The background shows some trees and a distant building.

## Trails

- Explores the magic of new-adult
- relationships and issues of middle-aged
- second-time-around relationships;
- Champions overcoming odds and past disappointments;

**Bergman Island**

**Vicky Krieps, Grace Delrue**





## Trails

- Highlights corporate thuggery, collusion, and conspiracy;
- Reveals the ethic and effort in building a criminal case;
- Probes enviromental stresses, workplace exploitation, racism, and cross border issues;
- Portrays the good and the bad in government.

Erin Brockovich  
Julia Roberts,  
Albert Finney



The vibe in Trails is comparable to the romantic comedy A Perfect Pairing, but punctuated by tensions related to the criminal conspiracy, and attempts by the corporations behind the toxic storm to intimidate and neutralize the protagonists.

It is further complicated by the subplot of a second-time-around romance!



A Perfect Pairing  
Victoria Justice, Adam Demos  
© 2022 Netflix, Inc.



# Suggested Cast

**Shelley - grad student,  
independent, spirited**



**Kathryn  
Newton**

**Pete - goofy, principled,  
loyal, teasing, analytic**



**Hunter  
Doohan**

**Elle  
Fanning**



**Joel  
Courtney**



**Debby  
Ryan**



**\*Actors represent examples  
of talent and are not  
attached to the project.**

**Tanner  
Buchanan**



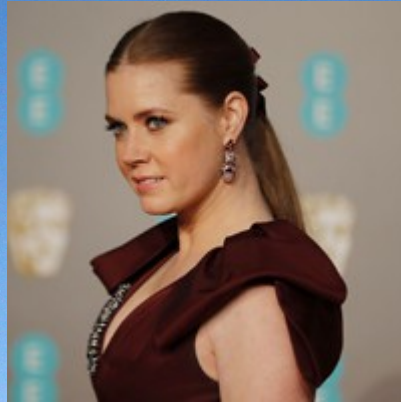


# Suggested Cast

Rhona - clever, empathetic,  
professional, single mom



Jeri Ryan



Amy Adams

Roy - Shelley's Dad, hard  
working, caring — and divorced



Rob Lowe



Steve Carell



Angelina Joli

Jack - FBI operative and Roy's  
friend, efficient and professional



Giancarlo Esposito



Leonardo DiCaprio

**\*Actors represent examples of talent and are not attached to project**





# Dr. Bob Abell

## *Writer/Screenwriter/ ...*

A serial entrepreneur, and pioneer in using technology and media for teaching and learning, Bob is also a driven environmentalist, trained in science — but with an enduring interest in the arts.

From grade school, a love of epic stories, a fascination with photography, and an interest in movies and theatre have taken Bob down many trails — included screenwriting, directing, and producing his first feature film: Corporate Prey.

(Released 2019, based on Bob's 2012 novel, The Corporation.)



Nominee 2019: Best Picture  
Best Cinematographer





# Connect

Dr. Bob Abell

[rabell@rovell.com](mailto:rabell@rovell.com)

613-435-7350



*Rovell Creative*